



Dial-Up Connections Instructions

First you must obtain the driver. Go to the web sites below.

[USB Drivers Download](#)

PART I – Installing the Driver

1. Make sure your cable is plug into your phone and then plug USB end into your PC or Laptop
2. Your computer should now indicate that 'New Hardware is found'
3. A Driver Wizard screen should pop up. Click "Next"
4. You should see two options available
 - *Search for a suitable driver for my device (Recommended)*
 - *Display a list of the known drivers for this device so that I can choose a specific driver.*
5. Please choose the **(Recommended)** choice.
6. Here you can see "optional search locations":
 - *Floppy disk drives*
 - *CD-ROM drives*
 - *Specify a locations*
 - *Microsoft Windows Update*

Make sure you have the CD ready and insert it into your CD-ROM drive. Then check "*CD-ROM drives*" only.

7. Click next and your PC should find the driver.

Windows XP – Instructions (For Windows 2000 see below)

PART II – Setting up a connection

- 1) Click - Start → Settings → Network Connections.
- 2) Select “Create New Connection” and click next.
- 3) Select “Connect to the Internet” and click next.
- 4) Select “Setup My Connection Manually” and click next.
- 5) Select “Connect Using a Dial Up Modem” and click next.
- 6) Select “Samsung CDMA Technologies” and Click Next
- 7) Choose a name for your connection and click next.

Verizon Low Speed


- Phone number: **#777**
- User: **WEB**
- Password: **WEB**

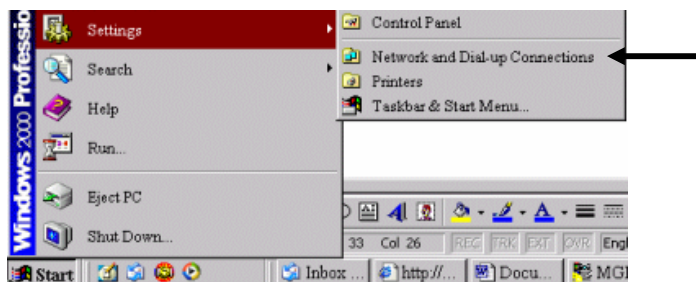
Verizon High Speed (230kbps)

- PhoneNumber = #777
- Username = “your phone number”@vzw3g.com
- Password = vzw

Please note: The above parameters are for Verizon. You may need to consult your carrier for their specific parameters.

NEXT STEP

Go to  scroll to “Settings” and then to “Network and Dial-up Connection”





Make New
Connection

: Make a new connection by double clicking the icon.

- You should see a “Connection Wizard”
- Choose **“Dial-up to the Internet”**
- Choose **“I want to set up my internet connection manually”**
- Next screen choose **“I connect through a phone line and a modem”**
- It will then ask you to **“Select a modem to use to connect to the Internet”** Scroll down the window and choose **“Sanyo USB Phone”**
- Put **#777** for the phone number as shown below and click **“Next”**

Internet Connection Wizard

Step 1 of 3: Internet account connection information

Type the phone number you dial to connect to your ISP.

Area code: Telephone number:
| | - #777

Country/region name and code:
United States of America (1)

Use area code and dialing rules

To configure connection properties, click Advanced.
(Most ISPs do not require advanced settings.)

Advanced...

< Back Next > Cancel

- User N
- Passw

- It will then ask for a connection name: **You choose any name you want.**
- Set up your Internet Mail account: **“NO”**
- **You should be finished**

The next time you go into your **“Network and Dial up Connection”**
You should see the connection name you chose.
Click on it and you should see the following:

Connect Connection to #777

User name: web

Password: *****

Save Password

Dial Cancel Properties Help

Click on Dial and you should be connecting to the Internet.

NOTE: Make sure your phone is on the Vision Plan. Vision plan phones only can dial-up to the Internet at high speeds.

If there are any problems please contact ATSales@cox.net

NOTE: If you have software already from DataPilot, FutureDial, or Sprint you most likely already have the drive set up.

TROUBLESHOOTING

If your computer does not recognize your phone there are two possibilities.

- **You must be signed up on the vision plan. Re-check the "My Plan" on Sprints website. www.sprintpcs.com**
- **Possibly the chip in the phone needs to reset. Keep the phone and cables connected to you PC and phone. Turn off the phone. Wait about 5 seconds. Then turn the phone on. The chip in the phone should be active now.**

To check and see do the following:

- Go to your " **My Computer**".
- Right click and choose "**Properties**"
- Go to the '**Hardware**' tab
- Select "**Device Manager**"
- Under Modems it should indicate " **Sanyo USB Phone**"